

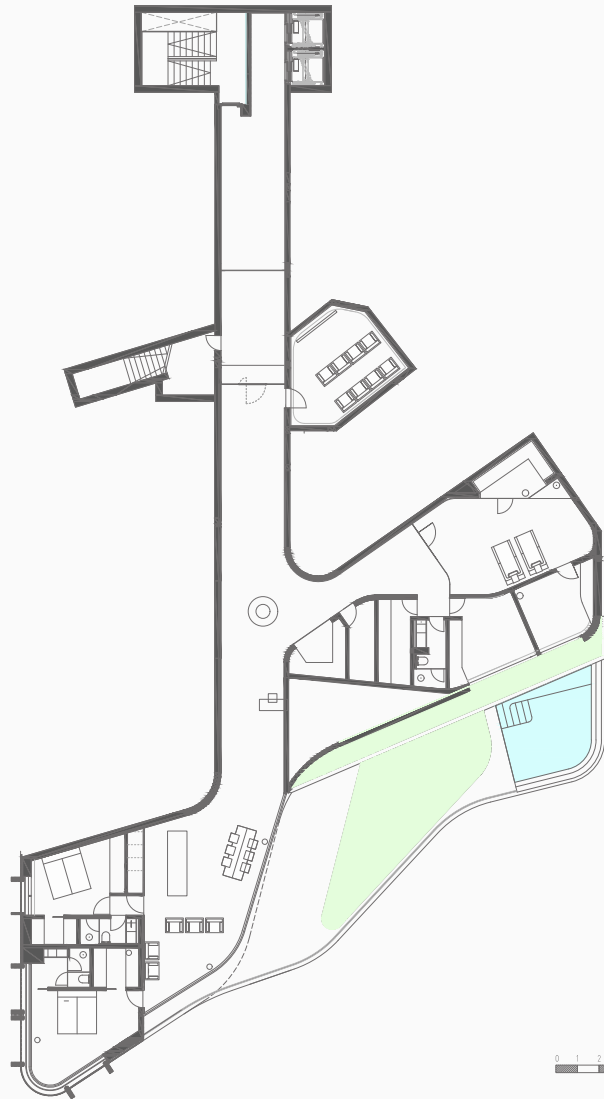
Hill 100

Indoor area m ²	395
Pool m ²	20
Terrace/garden m ²	82
Total area	497

Level	1
Bedroom	2
+ Extra room/Estancia	2
Bath	3
Storage	1
Parking space	2

Hill 100 also contains bespoke walk-in closets, private sauna, walk-in wine cellar, home cinema, gym area and a fully equipped laundry room.

Indoor area: (ES: construido). Follows Spanish standard and is defined as internal apartment area, including internal and external walls and 50 % of boundary walls, internal shafts. The specifications of all apartments are correct at the date of update but may be subject to adjustments so we reserve the right to make changes to the floor plan. Measurements are approximate and deviations may occur. The scale being used is Scale 1:350.



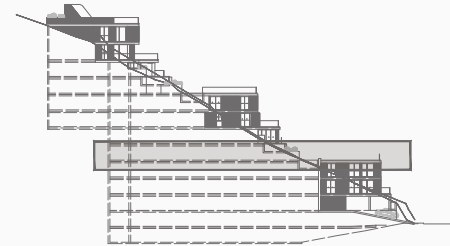
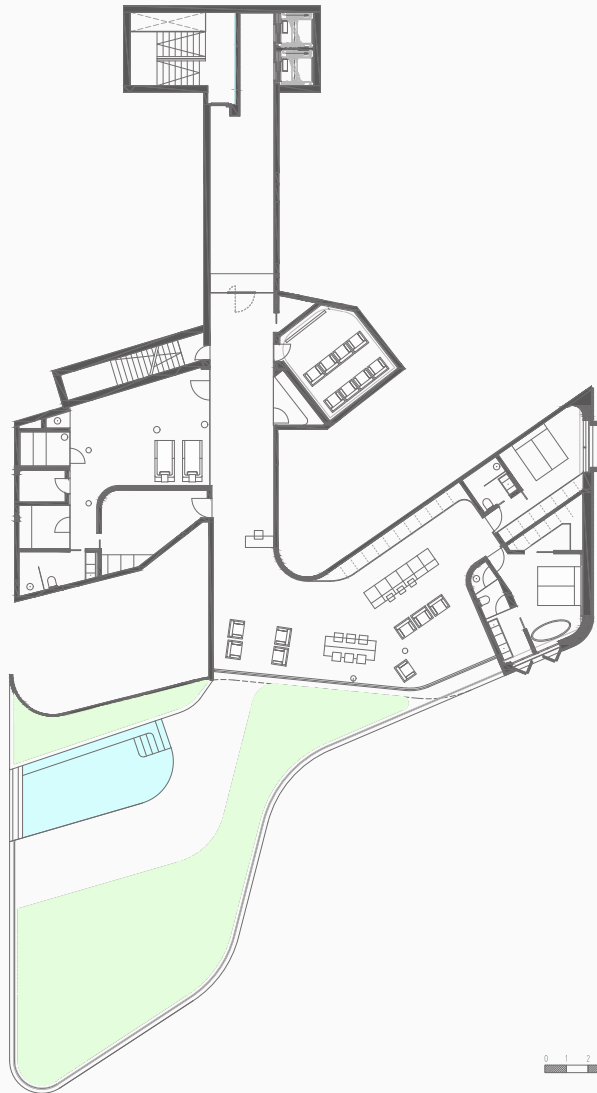
Hill 200

Indoor area m ²	315
Pool m ²	19
Terrace/garden m ²	86
Total area	420

Level	2
Bedroom	2
+ Extra room/Estancia	2
Bath	3
Storage	1
Parking space	2

Hill 200 also contains bespoke walk-in closets, private sauna, walk-in wine cellar, home cinema, gym area and a fully equipped laundry room.

Indoor area: (ES: construido). Follows Spanish standard and is defined as internal apartment area, including internal and external walls and 50 % of boundary walls, internal shafts. The specifications of all apartments are correct at the date of update but may be subject to adjustments so we reserve the right to make changes to the floor plan. Measurements are approximate and deviations may occur. The scale being used is Scale 1:350.



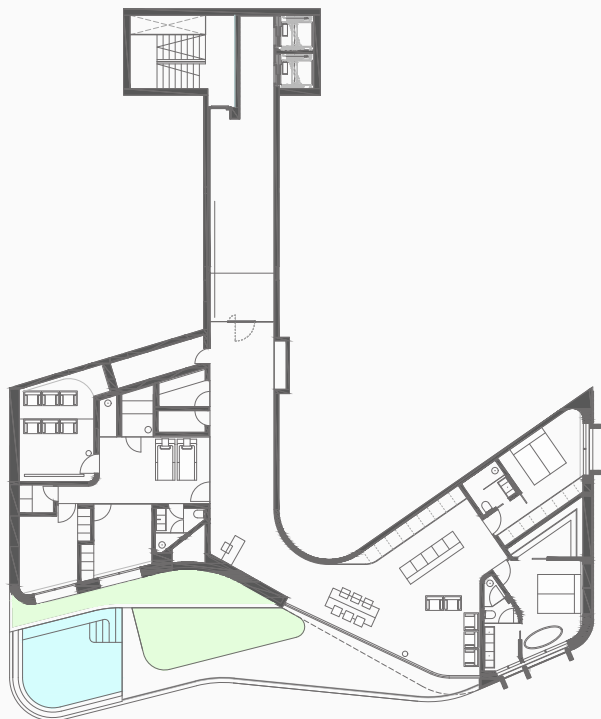
Hill 300

Indoor area m ²	297
Pool m ²	31
Terrace/garden m ²	160
Total area	488

Level	3
Bedroom	2
+ Extra room/Estancia	1
Bath	3
Storage	1
Parking space	2

Hill 300 also contains bespoke walk-in closets, private sauna, walk-in wine cellar, home cinema, gym area and a fully equipped laundry room.

Indoor area: (ES: construido). Follows Spanish standard and is defined as internal apartment area, including internal and external walls and 50 % of boundary walls, internal shafts. The specifications of all apartments are correct at the date of update but may be subject to adjustments so we reserve the right to make changes to the floor plan. Measurements are approximate and deviations may occur. The scale being used is Scale 1:350.



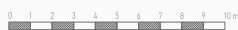
Hill 400

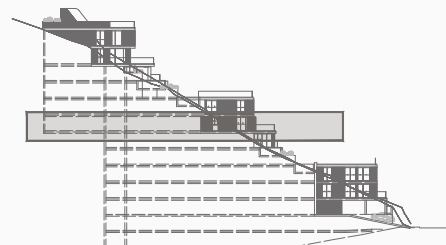
Indoor area m ²	243
Pool m ²	20
Terrace/garden m ²	57
Total area	320

Level	4
Bedroom	2
+ Extra room/Estancia	2
Bath	3
Storage	1
Parking space	2

Hill 400 also contains bespoke walk-in closets, private sauna, walk-in wine cellar, home cinema, gym area and a fully equipped laundry room.

Indoor area: (ES: construido). Follows Spanish standard and is defined as internal apartment area, including internal and external walls and 50 % of boundary walls, internal shafts. The specifications of all apartments are correct at the date of update but may be subject to adjustments so we reserve the right to make changes to the floor plan. Measurements are approximate and deviations may occur. The scale being used is Scale 1:350.





Hill 500

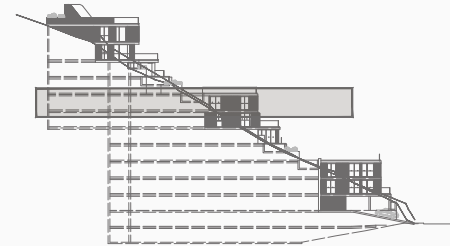
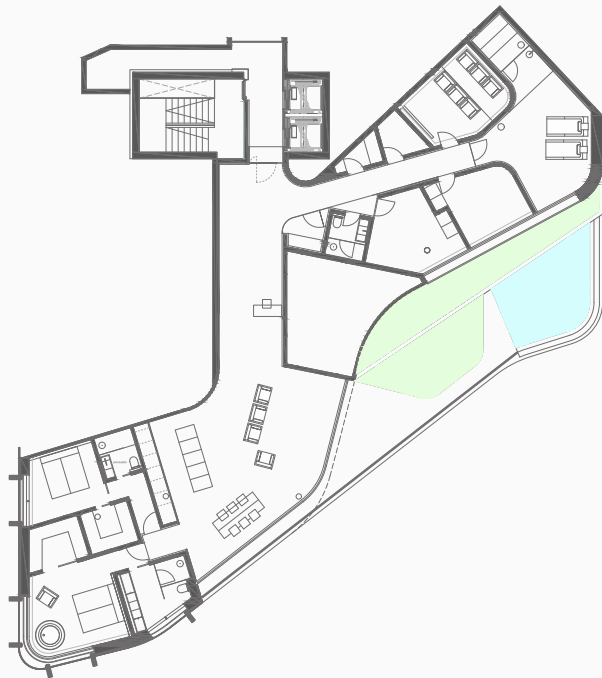
Indoor area m ²	288
Pool m ²	24
Terrace/garden m ²	195
Total area	507

Level	5
Bedroom	2
+ Extra room/Estancia	1
Bath	3
Storage	1
Parking space	2

Hill 500 also contains bespoke walk-in closets, private sauna, walk-in wine cellar, home cinema, gym area and a fully equipped laundry room.

Indoor area: (ES: construido). Follows Spanish standard and is defined as internal apartment area, including internal and external walls and 50 % of boundary walls, internal shafts. The specifications of all apartments are correct at the date of update but may be subject to adjustments so we reserve the right to make changes to the floor plan. Measurements are approximate and deviations may occur. The scale being used is Scale 1:350.





Hill 600

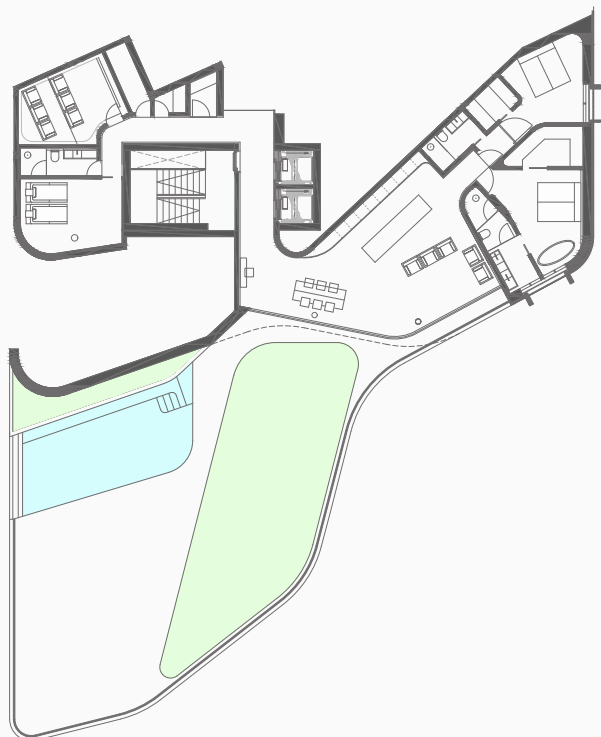
Indoor area m ²	279
Pool m ²	17
Terrace/garden m ²	55
Total area	351

Level	6
Bedroom	2
+ Extra room/Estancia	2
Bath	3
Storage	1
Parking space	2

Hill 600 also contains bespoke walk-in closets, private sauna, walk-in wine cellar, home cinema, gym area and a fully equipped laundry room.

Indoor area: (ES: construido). Follows Spanish standard and is defined as internal apartment area, including internal and external walls and 50 % of boundary walls, internal shafts. The specifications of all apartments are correct at the date of update but may be subject to adjustments so we reserve the right to make changes to the floor plan. Measurements are approximate and deviations may occur. The scale being used is Scale 1:350.





Hill 700

Indoor area m ²	201
Pool m ²	33
Terrace/garden m ²	189
Total area	423

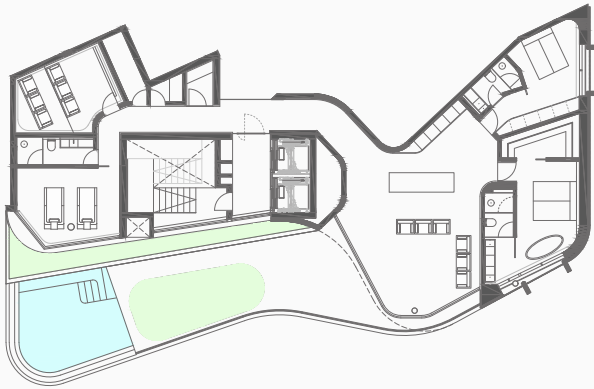
Level	7
Bedroom	2
+ Extra room/Estancia	1
Bath	3
Storage	1
Parking space	2

Hill 700 also contains bespoke walk-in closets, private sauna, walk-in wine cellar, home cinema, gym area or extra room and a fully equipped laundry room.

Indoor area: (ES: construido). Follows Spanish standard and is defined as internal apartment area, including internal and external walls and 50 % of boundary walls, internal shafts. The specifications of all apartments are correct at the date of update but may be subject to adjustments so we reserve the right to make changes to the floor plan. Measurements are approximate and deviations may occur. The scale being used is Scale 1:350.

0 1 2 3 4 5 6 7 8 9 10 m





Hill 800

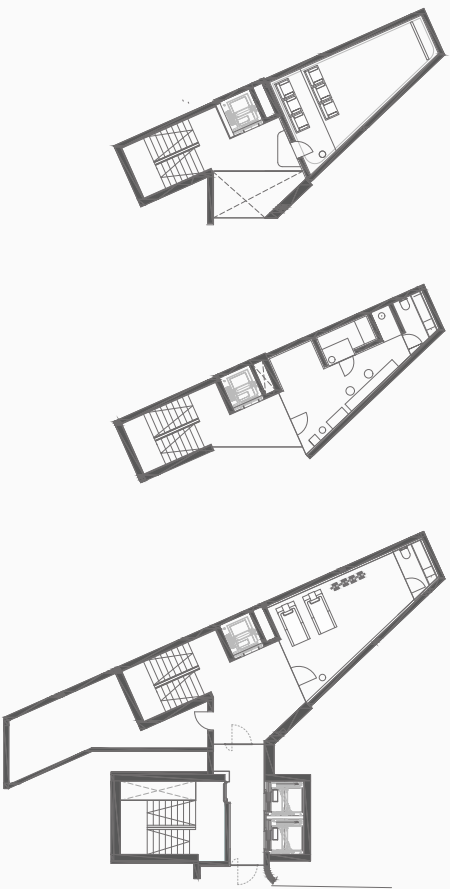
Indoor area m ²	191
Pool m ²	22
Terrace/garden m ²	57
Total area	270

Level	8
Bedroom	2
+ Extra room/Estancia	1
Bath	3
Storage	1
Parking space	2

Hill 800 also contains bespoke walk-in closets, private sauna, walk-in wine cellar, home cinema, gym area or extra room and a fully equipped laundry room.

Indoor area: (ES: construido). Follows Spanish standard and is defined as internal apartment area, including internal and external walls and 50 % of boundary walls, internal shafts. The specifications of all apartments are correct at the date of update but may be subject to adjustments so we reserve the right to make changes to the floor plan. Measurements are approximate and deviations may occur. The scale being used is Scale 1:350.

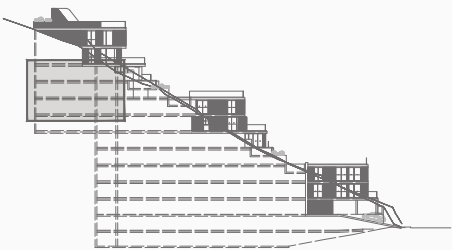




Level 8

Level 7

Level 6



The Villa

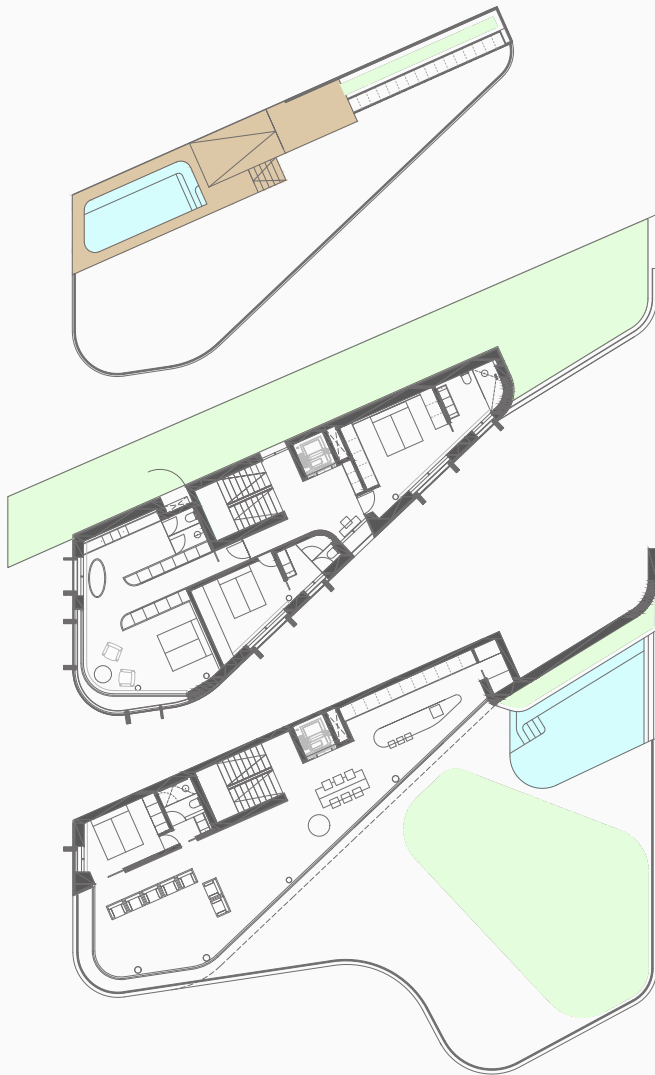
Indoor area m²	502
Pool m²	37+20
Terrace/garden m²	298
Total area	857

Level	6 – 11
Bedroom	4
Bath	6
Storage	1
Parking space	3

The Villa also contains bespoke walk-in closets, private sauna, walk-in wine cellar, home cinema, gym area a fully equipped laundry room and two pools, one on each terrace.

Indoor area: (ES: construido). Follows Spanish standard and is defined as internal apartment area, including internal and external walls and 50 % of boundary walls, internal shafts. The specifications of all apartments are correct at the date of update but may be subject to adjustments so we reserve the right to make changes to the floor plan. Measurements are approximate and deviations may occur. The scale being used is Scale 1:350.





Level 11

Level 10

Level 9

0 1 2 3 4 5 6 7 8 9 10 m



The Villa

Indoor area m ²	502
Pool m ²	37+20
Terrace/garden m ²	298
Total area	857

Level	6 – 11
Bedroom	4
Bath	6
Storage	1
Parking space	3

The Villa also contains bespoke walk-in closets, private sauna, walk-in wine cellar, home cinema, gym area a fully equipped laundry room and two pools, one on each terrace.

Indoor area: (ES: construido). Follows Spanish standard and is defined as internal apartment area, including internal and external walls and 50 % of boundary walls, internal shafts. The specifications of all apartments are correct at the date of update but may be subject to adjustments so we reserve the right to make changes to the floor plan. Measurements are approximate and deviations may occur. The scale being used is Scale 1:350.